



SOFT PLUG[®]

Discover

OASIS

for All

of Your

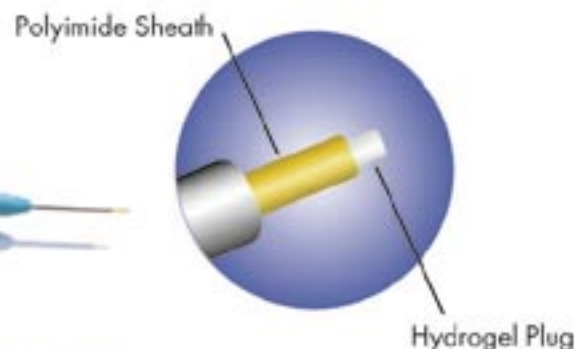
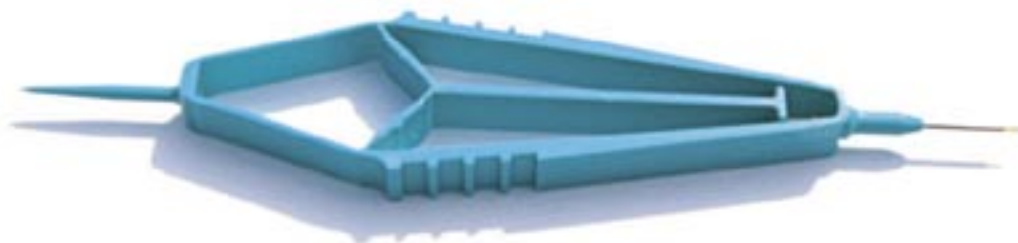
Dry Eye

Needs



OASIS[®] 

FORM FIT™



Form Fit™ is truly a one size fits all plug. Once inserted into the punctum, Form Fit™ hydrates when it contacts tear film into a soft, pliable, gelatinous material. As it hydrates, it increases in size until it completely fills the vertical canalicular cavity to form a perfect fit. There is no need for a cap or anchor at the end of the plug.

The Form Fit™ plug is easily inserted into the canaliculus and comes preloaded on an inserter. The polyimide sheath is inserted into the punctum and the inserter handle compressed to expel the hydrogel plug.

To remove the Form Fit™, simply flush saline solution through the punctal opening and the gelatinous material will be expressed through the nasal passage.

PRODUCT FEATURES

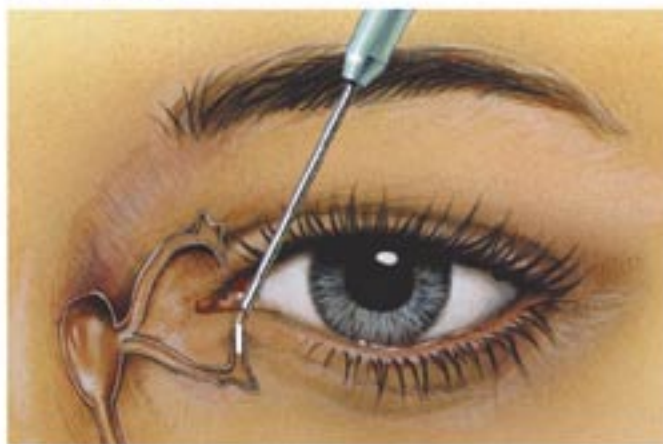
- In its dry state, the material is a rigid rod measuring 0.3mm in diameter by 3.0mm long
- The Form Fit™ plug requires no special storage
- The need for punctal measurement has been eliminated
- Hydrogel plug is biocompatible and has no foreign body sensation

Patent #5,116,371 Patent Pending



"I selected the new permanent Form Fit Plug because of its ease of insertion and patient comfort. The Form Fit plugs that are placed completely within the puncta are so easy to insert, my threshold for using them is very low in patients that could benefit from punctal occlusion. Patient response has been overwhelmingly positive and immediate. I would highly recommend the Form Fit Plugs to my colleagues."
Jacqueline D. Griffiths, M.D.

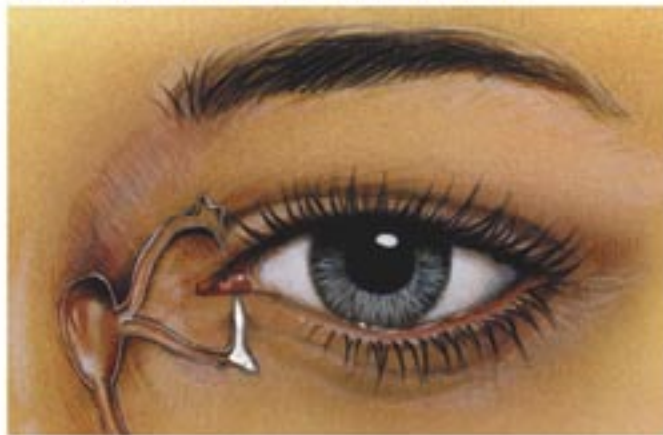
INSERTION



IMMEDIATELY AFTER INSERTION



10 MINUTES AFTER INSERTION



Soft Plug®

Silicone Punctum Plugs

The distinctive low profile dome head combined with a softer more flexible silicone maximizes patient comfort. The pointed nose design simplifies insertion and the large anchor with wide shelf firmly secures plug making dislocation less likely.

The inserter provides greater control and eliminates premature plug release. SOFT PLUG® Silicone Plugs are removable. Available preloaded in 2-pack and 6-pack dispenser box or non-loaded Economy Pack*.

Micro Punctum Plugs - 0.4mm

Mini Punctum Plugs - 0.5mm

Petite Punctum Plugs - 0.6mm

Small Punctum Plugs - 0.7mm

Medium Punctum Plugs - 0.8mm



*Includes 2 inserters and 10 trays of 2 plugs each.
Trays equipped with an alignment slot for quick loading.



Collagen Intracanalicular Plugs



The collagen intracanalicular plugs have a smooth proprietary finish that simplifies insertion of the plug. Collagen plugs are ideal for short term, diagnostic and post-surgical occlusion. Plugs are 2mm in length and absorbable within 2-5 days.

Diameter Sizes
0.2mm, 0.3mm and 0.4mm

Extended Duration Plugs



Extended Duration absorbable plugs are designed to provide patient comfort for up to 3 months. This long lasting plug is effective and economical for transient dry eye symptoms following surgery. Extended Duration plugs are 2mm in length.

Diameter Sizes
0.3mm, 0.4mm and 0.5mm

James Lewis, MD, Jenkintown, Pennsylvania – *"LASIK induces 2 to 6 months of compromised tear production and ocular surface vulnerability. The Extended Duration absorbable plug improves ocular surface health during this period and is well tolerated by LASIK patients... I will use this plug in the majority of my refractive patients...SOFT PLUG® absorbable is the right tool at the right time."*

Instruments

Sizing Gauges

Sizing Gauges facilitate accurate punctal measurement prior to plug insertion. Gauges are bar coded for quick size identification.
Sizes: 0.5mm and 0.6mm tips
0.7mm and 0.8mm tips



Castroviejo Lacrimal Dilator

Double End Dilator provides a simple and controlled method for punctal dilation.



Jeweler's Forceps

Jeweler's Forceps are constructed with a sharp tip for intricate procedures and are recommended for SOFT PLUG® insertion.

Types: Straight #3 and Curved #7



Phenol Red Thread Tear Test

ZONE-QUICK cotton thread tear test easily and accurately measures tear volume in 15 seconds.
50 sterile strips per box.



Support Materials

Patient Education Support Materials

OASIS would like to assist you in growing your Dry Eye practice. We have developed a number of marketing support materials that will aid you in educating patients about Dry Eye Syndrome and the methods available to ease the symptoms.

Dry Eye Patient Brochure

English, Spanish and French



Dry Eye Wall Chart



Dry Eye Video

Patient Education and Punctal Occlusion Training

514 S. Vermont Avenue
Glendora, CA 91741 USA

800.528.9786
909.305.5400

800.631.7210 FAX
909.305.9987 FAX

www.oasismedical.com



Refractive Surgical Products

- Colvard Pupillometer • Corneal Marking Pads • Disc Fluid Filter
- SOFT CELL® PVA Foam • Feather® Groove Blades • LASIK Cannulas
- Microkeratome Blades and Tubing Sets • Terry-Schanzlin Astigmatome

Cataract Surgical Products

Disposable Instruments

- Anesthesia Needles • Capsule Polishers • Capsulotomy Cystotomes
- Cortex Extractors • Hydrodissection Cannulas • Irrigation / Air Injection Cannulas
- Lacrimal Cannulas & Intubation Sets • Viscoelastic Cannulas

Cataract Scalpels (Reusable & Disposable)

- Groove • Incision • Keratomes • MVR • Tunnel • Wound Enlargement

Other Cataract Products

- Corneal Shields • I/A Bimanual Handpieces
- Visco Shield® HPMC Viscoelastic (EXPORT ONLY)